

4

3

2

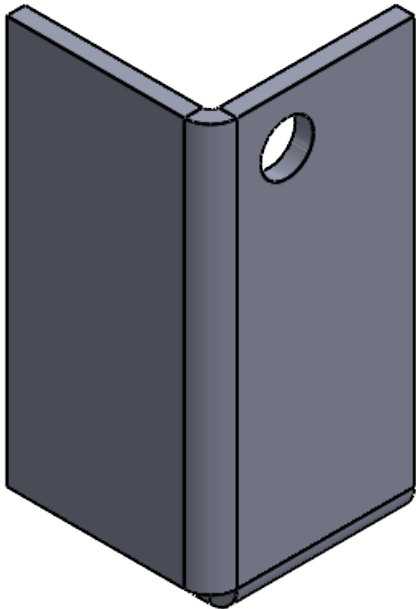
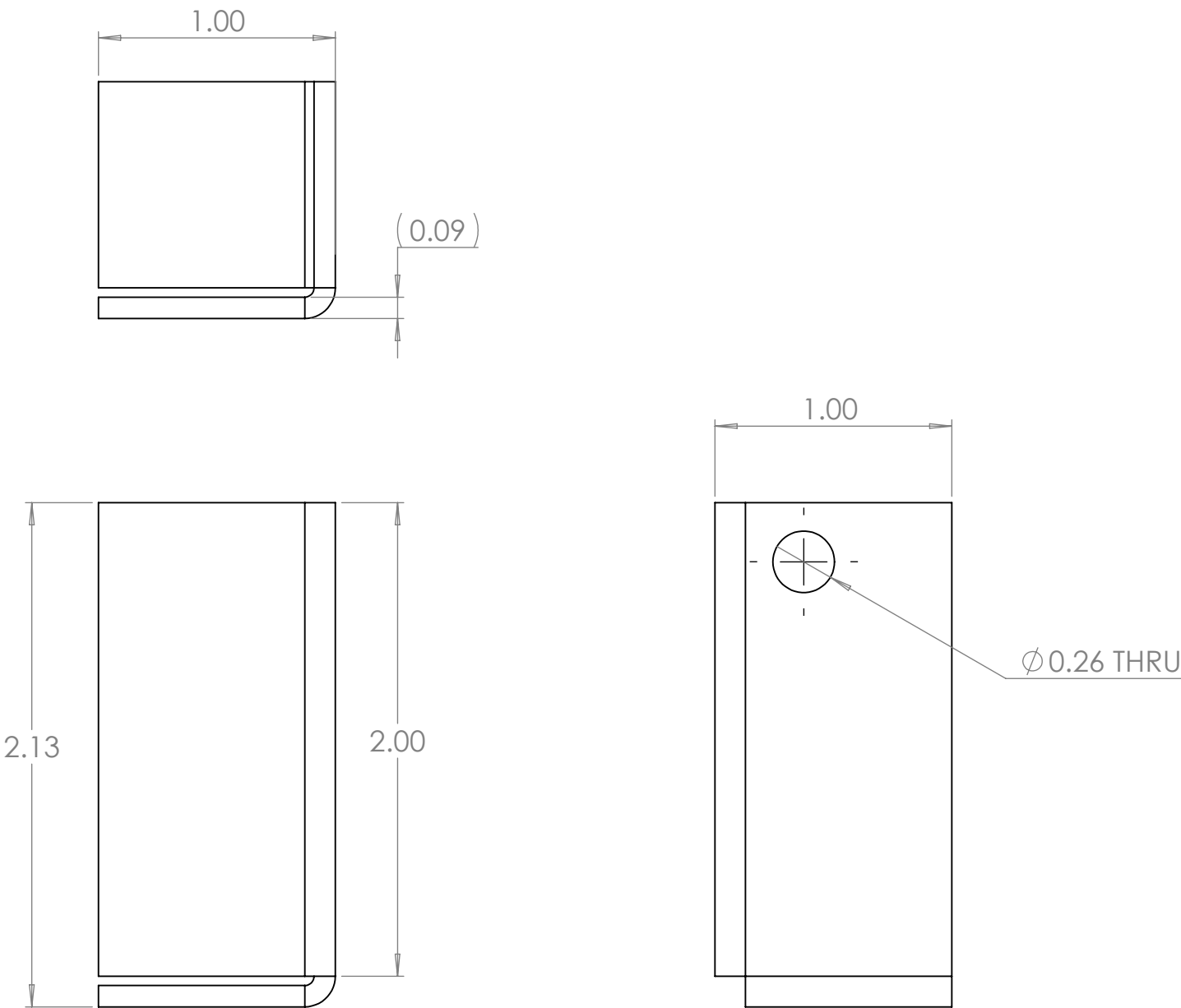
1

B

B

A

A


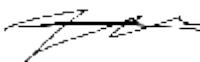


NOTES: UNLESS OTHERWISE SPECIFIED.

1. PARAMETRIC MODEL. ALL DIMENSIONS FURTHER SPECIFIED IN 003-00032.
2. FLAT PATTERN FOR PART SPECIFIED ON LAST SHEET OF DRAWING.
3. PART SHALL BE FREE OF ANY SHARP EDGES AND BURRS.
4. PART TO BE CLEANED OF ALL OIL AND DEBRIS.
5. MATERIAL: A1008 STEEL
6. FINISH: NONE
7. GAUGE: 13
8. PART SHALL NOT BE MODIFIED BY ANY PARTY OUTSIDE PAPERLESS PARTS, INC UNLESS WRITTEN OR EXPRESS APPROVAL HAS BEEN PERMITTED FOR THE PART.

PROPRIETARY AND CONFIDENTIAL

THE INFORMATION CONTAINED IN THIS DRAWING IS THE SOLE PROPERTY OF PAPERLESS PARTS, INC. ANY REPRODUCTION IN PART OR AS A WHOLE WITHOUT THE WRITTEN PERMISSION OF PAPERLESS PARTS, INC IS PROHIBITED.

UNLESS OTHERWISE SPECIFIED:		NAME	DATE	paperlessPARTS 		
DIMENSIONS ARE IN INCHES TOLERANCES: ANGULAR: MACH± 1.0° BEND ± 0.5° ONE PLACE DECIMAL ± 0.1 TWO PLACE DECIMAL ± 0.05	DRAWN	NM	8/30/2024	TITLE: MOUNT, RIGHT, SMALL FAN SLOT, FULL SERVER RACK		
	CHECKED					
	ENG APPR.					
	MFG APPR.					
INTERPRET GEOMETRIC TOLERANCING PER: ASME Y14.5	Q.A.			SIZE DWG. NO. REV B 003-00032 000		
MATERIAL	COMMENTS:					
A1008 STEEL						
FINISH						
NONE			SCALE: NTS WEIGHT: SEE MODEL SHEET 1 OF 2			
DO NOT SCALE DRAWING						

